

Assignment 8.1

Name: _____

1. Identify the following triads by root (letter name), quality (M, m, dim, aug) and inversion (no label, 6, 6/4). (45 pts.)

sample

D $aug_{6/4}$

2. Given the root, quality and inversion, write the following triads. (20 pts.)

$E^{\flat} M_{4}^6$ $F aug^6$ $B m$ $D M^6$ $A dim_{4}^6$

$E^{\sharp} m^6$ $C dim_{4}^6$ $G^{\flat} aug$ $D^{\sharp} dim^6$ $A M_{4}^6$

3. Name the key in the mode indicated. Then give the Roman numeral for each chord in the specified key. Be sure you correctly show chord quality and inversion by the type of Roman numeral you use (e.g., lowercase = minor) and figured bass symbols. (16 pts.)

Major keys:

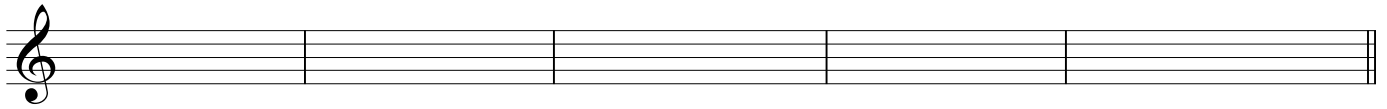
_____ : _____ _____ : _____ _____ : _____ _____ : _____

Minor keys:

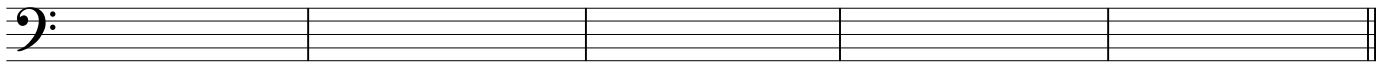
_____ : _____ _____ : _____ _____ : _____ _____ : _____

Introduction to Music Theory/Assignment 8.1

4. Write the chord indicated by the Roman numeral and figured bass symbol in the key and mode specified.
Use accidentals rather than key signatures.
(20 pts.)



B major: ii⁶ I₄⁶ V IV⁶ vii⁰⁶



G minor: i⁶ III+ vii⁰⁶ VI iv₄⁶