

Enrichment Assignment 8.1

Name: _____

1. Identify the following triads by root (letter name), quality (M, m, dim, aug) and inversion (no label, 6, 6/4). (45 pts.)

sample

A musical staff in bass clef containing eight triads. The first triad is F major with a sharp sign above the notes. The second is G major. The third is A major. The fourth is B major. The fifth is C major. The sixth is D major. The seventh is E major. The eighth is F major.

F: dim⁶

A musical staff in bass clef containing eight triads. The first is G major. The second is A major. The third is B major. The fourth is C major. The fifth is D major. The sixth is E major. The seventh is F major. The eighth is G major.

2. Given the root, quality and inversion, write the following triads. (20 pts.)

An empty musical staff in bass clef with five measures for writing triads.

G[#] m₄⁶

A[#] dim⁶

D^b M

F m⁶

C aug₄⁶

An empty musical staff in bass clef with five measures for writing triads.

A^b M⁶

E^b aug₄⁶

D[#] dim

F[#] m⁶

B M₄⁶

3. Name the key in the mode indicated. Then give the Roman numeral for each chord in the specified key. Be sure you correctly show chord quality and inversion by the type of Roman numeral you use (e.g., lowercase = minor) and figured bass symbols. (16 pts.)

Major keys:

A musical staff in treble clef containing four triads. The first is G major. The second is A major. The third is B major. The fourth is C major.

_____ : _____ : _____ : _____ : _____

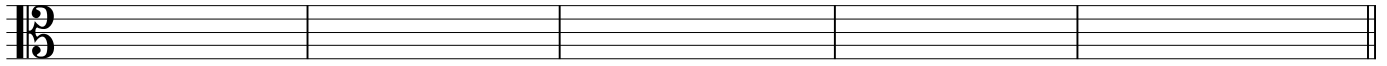
Minor keys:

A musical staff in bass clef containing four triads. The first is G major. The second is A major. The third is B major. The fourth is C major.

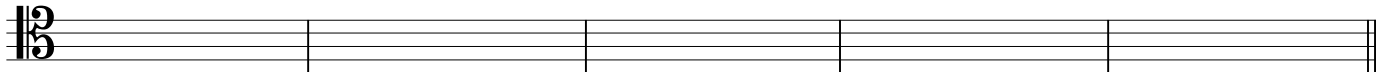
_____ : _____ : _____ : _____ : _____

Introduction to Music Theory/Enrichment Assignment 8.1

4. Write the chord indicated by the Roman numeral and figured bass symbol in the key and mode specified.
Use accidentals rather than key signatures.
(20 pts.)



A major: IV⁶ iii⁶₄ V vi⁶ ii⁶



b^b minor: III⁶ V ii^{o6} i VI⁶₄