

Enrichment Assignment 4 Key



1. Write key signatures and *ascending* scales as indicated:

a. Parallel major of b^b minor

b. Relative major of $f^\#$ minor

c. Relative minor (harmonic) of G^b major

d. Relative minor (melodic) of B major

e. Relative major of c minor

f. Parallel major of $f^\#$ minor

g. Parallel minor (harmonic) of $C^\#$ major

h. Relative minor (melodic) of C major

2. Write key signatures and *descending* scales as indicated:

a. Parallel minor (natural) of E major

b. Relative minor (harmonic) of D^b major

c. Parallel minor (harmonic) of D major

d. Relative minor (natural) of $C^\#$ major

e. Parallel major of e^b minor

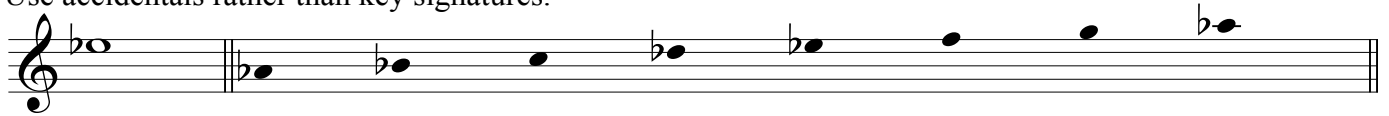
f. Relative minor (harmonic) of C^b major

g. Parallel minor (melodic) of F major

h. Parallel minor (harmonic) of B major

Introduction to Music Theory/Enrichment Assignment 4 Key

3. Given the pitch and scale degree, write the requested *ascending* scale for each of the following. Use accidentals rather than key signatures.



[^]₅ major scale



[^]₆ melodic minor scale



[^]₃ major scale



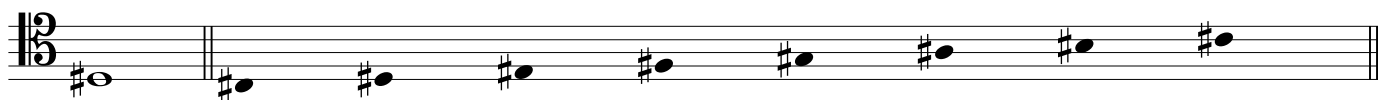
[^]₇ harmonic minor scale



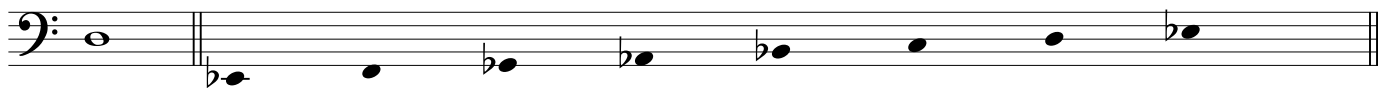
[^]₄ major scale



[^]₆ natural minor scale



[^]₂ major scale



[^]₁ natural minor scale

Introduction to Music Theory/Enrichment Assignment 4 Key

4. Given the tonic and type of scale, write the requested scale degree in the staff.

Three musical staves, each with a single note. The first staff is in treble clef with a key signature of one flat (B-flat), containing a note on the second line (C). The second staff is in bass clef with a key signature of one sharp (F-sharp), containing a note on the second space (E). The third staff is in bass clef with a key signature of two flats (B-flat and E-flat), containing a note on the second space (B-flat).

6̂ : c harmonic minor

4̂ : e natural minor

7̂ : b^b melodic minor

Three musical staves, each with a single note. The first staff is in bass clef with a key signature of one sharp (F-sharp), containing a note on the second space (F-sharp). The second staff is in bass clef with a key signature of two sharps (F-sharp and C-sharp), containing a note on the second space (D-sharp). The third staff is in treble clef with a key signature of two flats (B-flat and E-flat), containing a note on the second space (A-flat).

6̂ : f[#] melodic minor

5̂ : d[#] natural minor

7̂ : a^b harmonic minor

Three musical staves, each with a single note. The first staff is in bass clef with a key signature of two sharps (F-sharp and C-sharp), containing a note on the second space (C-sharp). The second staff is in bass clef with a key signature of one flat (B-flat), containing a note on the second space (G). The third staff is in treble clef with a key signature of one flat (B-flat), containing a note on the second space (F).

7̂ : c[#] natural minor

6̂ : g harmonic minor

3̂ : f harmonic minor

Three musical staves, each with a single note. The first staff is in bass clef with a key signature of one flat (B-flat), containing a note on the second space (D). The second staff is in bass clef with a key signature of two sharps (F-sharp and C-sharp), containing a note on the second space (G-sharp). The third staff is in bass clef with a key signature of two flats (B-flat and E-flat), containing a note on the second space (E-flat).

6̂ : d harmonic minor

7̂ : g[#] melodic minor

4̂ : e^b melodic minor

5. Given the tonic and type of scale, including modes, write the requested scale degree in the staff.

Three musical staves, each with a single note. The first staff is in bass clef with a key signature of two sharps (F-sharp and C-sharp), containing a note on the second space (C-sharp). The second staff is in bass clef with a key signature of one flat (B-flat), containing a note on the second space (F). The third staff is in treble clef with a key signature of two sharps (F-sharp and C-sharp), containing a note on the second space (B).

7̂ : C[#] Mixolydian

6̂ : F Aeolian

3̂ : B Ionian

Three musical staves, each with a single note. The first staff is in bass clef with a key signature of one sharp (F-sharp), containing a note on the second space (E). The second staff is in bass clef with a key signature of one flat (B-flat), containing a note on the second space (A-flat). The third staff is in bass clef with a key signature of two sharps (F-sharp and C-sharp), containing a note on the second space (F-sharp).

6̂ : E Mixolydian

6̂ : A^b Dorian

5̂ : F[#] Lydian

Three musical staves, each with a single note. The first staff is in treble clef with a key signature of one sharp (F-sharp), containing a note on the second space (F-sharp). The second staff is in bass clef with a key signature of one sharp (F-sharp), containing a note on the second space (G). The third staff is in bass clef with a key signature of two flats (B-flat and E-flat), containing a note on the second space (B-flat).

2̂ : F[#] Phrygian

4̂ : G Lydian

7̂ : B^b Phrygian

Three musical staves, each with a single note. The first staff is in bass clef with a key signature of one flat (B-flat), containing a note on the second space (F). The second staff is in bass clef with a key signature of two sharps (F-sharp and C-sharp), containing a note on the second space (G-sharp). The third staff is in treble clef with a key signature of two flats (B-flat and E-flat), containing a note on the second space (B).

4̂ : F Dorian

5̂ : G[#] Locrian

3̂ : B Aeolian