

Enrichment Assignment 4

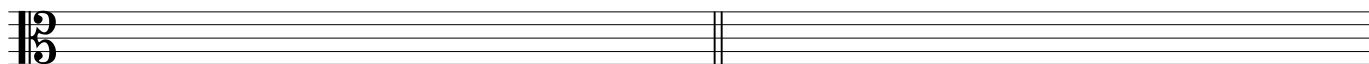
Name: _____

1. Write key signatures and *ascending* scales as indicated:



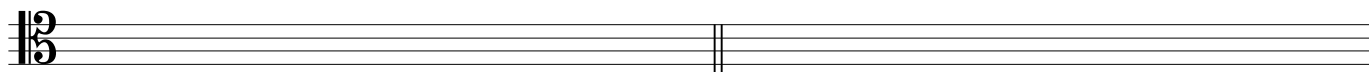
a. Parallel major of b^b minor

b. Relative major of $f^\#$ minor



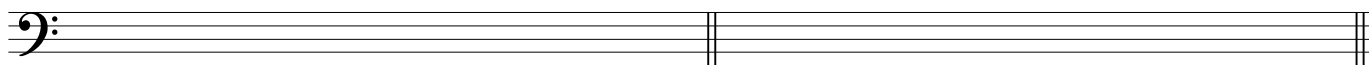
c. Relative minor (harmonic) of G^b major

d. Relative minor (melodic) of B major



e. Relative major of c minor

f. Parallel major of $f^\#$ minor



g. Parallel minor (harmonic) of $C^\#$ major

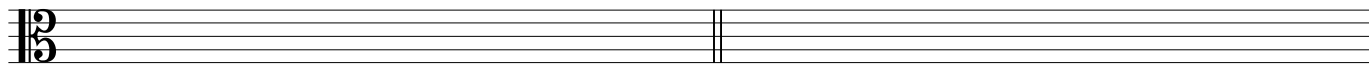
h. Relative minor (melodic) of C major

2. Write key signatures and *descending* scales as indicated:



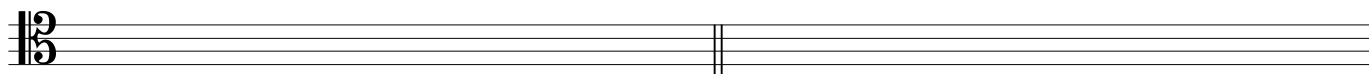
a. Parallel minor (natural) of E major

b. Relative minor (harmonic) of D^b major



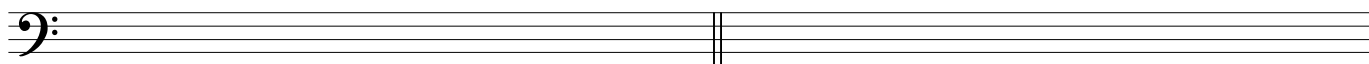
c. Parallel minor (harmonic) of D major

d. Relative minor (natural) of $C^\#$ major



e. Parallel major of e^b minor

f. Relative minor (harmonic) of C^b major

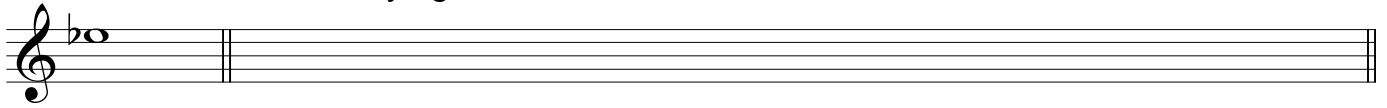


g. Parallel minor (melodic) of F major

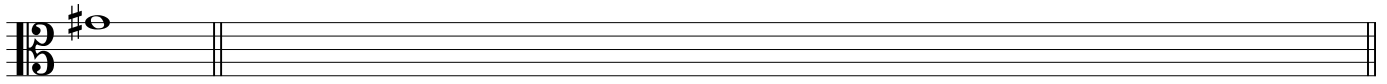
h. Parallel minor (harmonic) of B major

Introduction to Music Theory/Enrichment Assignment 4

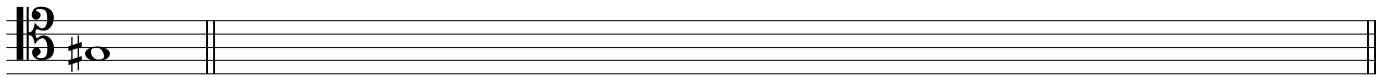
3. Given the pitch and scale degree, write the requested *ascending* scale for each of the following. Use accidentals rather than key signatures.



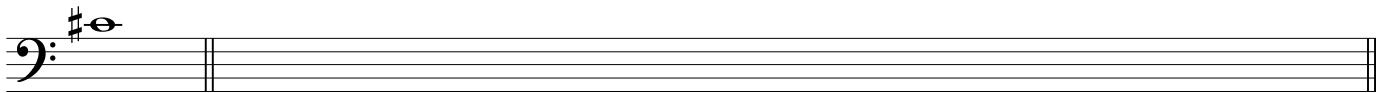
[^]₅ major scale



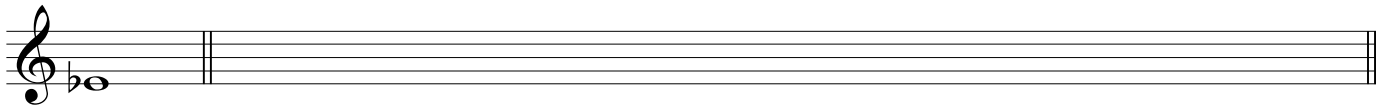
[^]₆ melodic minor scale



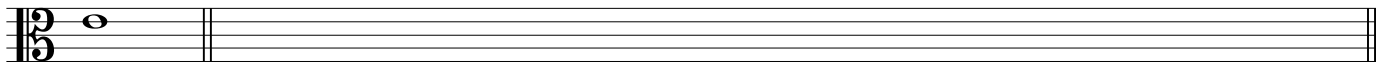
[^]₃ major scale



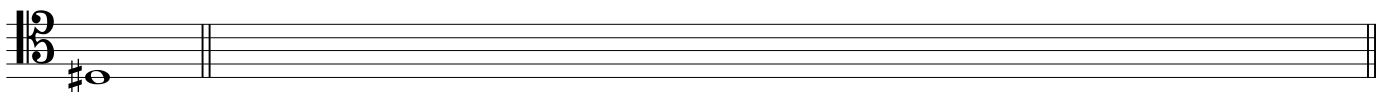
[^]₇ harmonic minor scale



[^]₄ major scale



[^]₆ natural minor scale



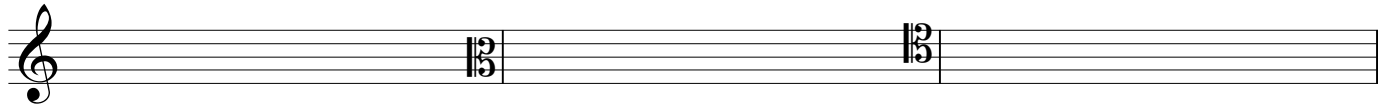
[^]₂ major scale



[^]

Introduction to Music Theory/Enrichment Assignment 4

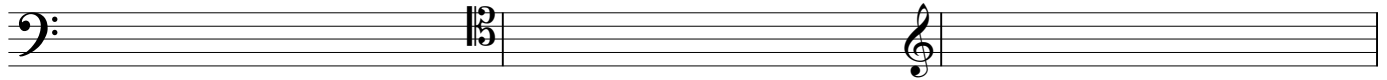
4. Given the tonic and type of scale, write the requested scale degree in the staff.



$\hat{6}$: c harmonic minor

$\hat{4}$: e natural minor

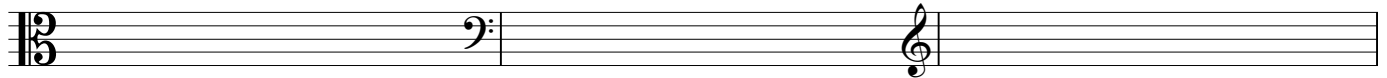
$\hat{7}$: b \flat melodic minor



$\hat{6}$: f \sharp melodic minor

$\hat{5}$: d \sharp natural minor

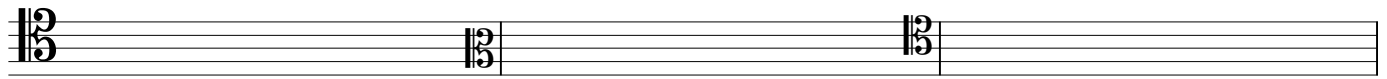
$\hat{7}$: a \flat harmonic minor



$\hat{7}$: c \sharp natural minor

$\hat{6}$: g harmonic minor

$\hat{3}$: f harmonic minor

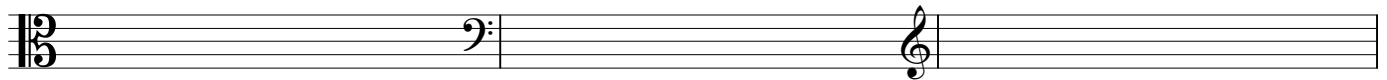


$\hat{6}$: d harmonic minor

$\hat{7}$: g \sharp melodic minor

$\hat{4}$: e \flat melodic minor

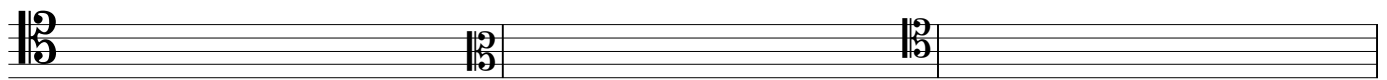
5. Given the tonic and type of scale, including modes, write the requested scale degree in the staff.



$\hat{7}$: C \sharp Mixolydian

$\hat{6}$: F Aeolian

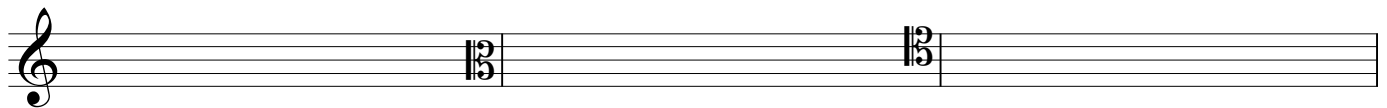
$\hat{3}$: B Ionian



$\hat{6}$: E Mixolydian

$\hat{6}$: A \flat Dorian

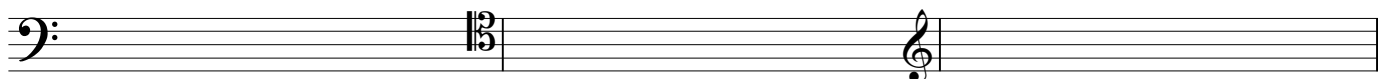
$\hat{5}$: F \sharp Lydian



$\hat{2}$: F \sharp Phrygian

$\hat{4}$: G Lydian

$\hat{7}$: B \flat Phrygian



$\hat{4}$: F Dorian

$\hat{5}$: G \sharp Locrian

$\hat{3}$: B Aeolian