

Enrichment Assignment 3.2 Key

Transposing modes

1. In each of the following *diatonic scales*, mark the two locations of the half steps. Be sure to consider the accidentals when determining the location of the half steps. Write the name of each mode in the blank space below each scale. (4 pts.)

1 2 3 4 5 6 7 1 | 1 2 3 4 5 6 7 1

a. Mixolydian b. Dorian

1 2 3 4 5 6 7 1 | 1 2 3 4 5 6 7 #1

c. Lydian d. Phrygian

2. In each of the following *diatonic scales*, mark the two locations of the half steps. Be sure to consider the key signatures/accidentals when determining the location of the half steps. Write the name of each mode in the blank space below each scale. (4 pts.)

a. Lydian (major/↑4) b. Mixolydian (major/↓7)

c. Dorian (minor/↑6) d. Phrygian (minor/↓2)

3. Write the following scales using either accidentals or key signatures:

a. B^b Dorian b. B Lydian

c. F Locrian d. F# Aeolian

Introduction to Music Theory/Enrichment Assignment 3.2 Key (Transposing modes)

4. Determine the tonic and scale used in each of the following melodic fragments:



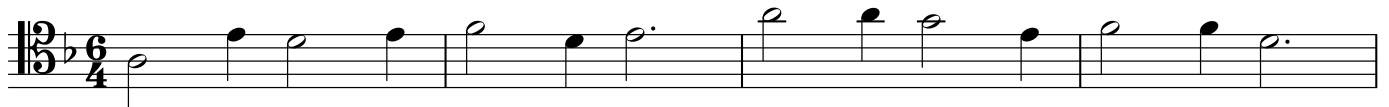
a. D Locrian (1/2 steps between 1-2 and 4-5)



b. D Lydian (major with raised 4)



c. A-flat Mixolydian (major with lowered 7)



d. A Phrygian (minor with lowered 2)



e. C Dorian (minor with raised 6)