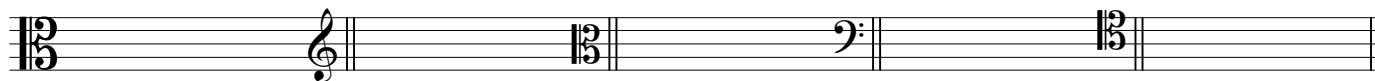


Enrichment Assignment 3.1

C Clef key signatures

Name: _____

1. Write the correct key signature for each *major key* and write a note to show the scale degree requested for each. (60 pts.; 4 pts. each)



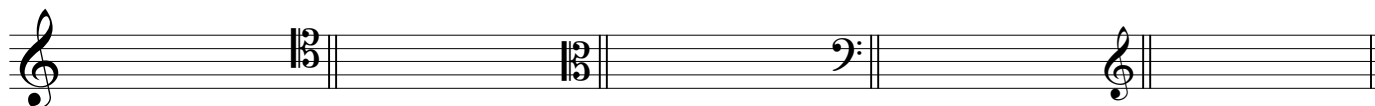
B major
dominant

F major
mediant

D major
submediant

C# major
subdominant

D^b major
mediant



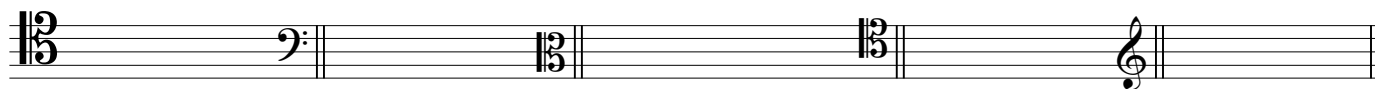
A major
leading tone

G^b major
tonic

C major
supertonic

G major
leading tone

A^b major
subdominant



F# major
supertonic

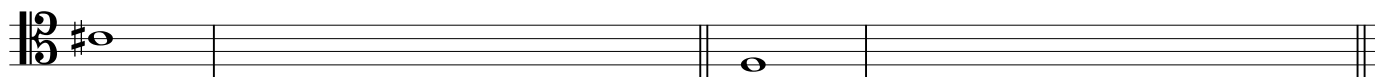
E^b major
dominant

C^b major
submediant

E major
tonic

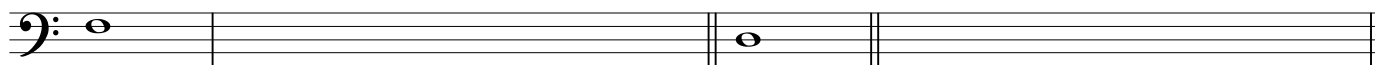
D major
subdominant

2. Given the pitch and scale degree, write the correct major scale using accidentals, not key signatures. (40 pts.; 5 pts. each)



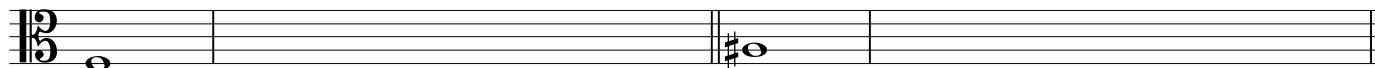
a. submediant

b. dominant



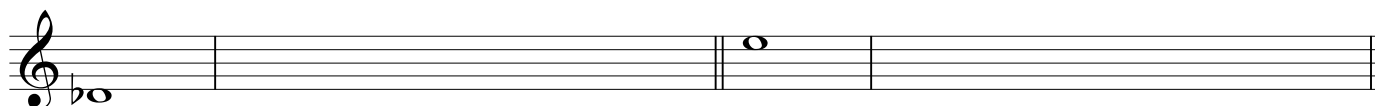
c. leading tone

d. subdominant



e. supertonic

f. mediant



g. tonic

h. subdominant