

# Enrichment Assignment 11.1

Name: \_\_\_\_\_

1. Rewrite each of the following 7th chords in close root position. Determine the root (letter name), quality (M7, m7, Mm7, ø7, °7) and inversion (7, 6/5, 4/3, 2). (18 pts.)

sample

G# ø2

\_\_\_\_\_

\_\_\_\_\_

2. Given the root, quality and inversion, write the following 7th chords. (12 pts.)

EM<sub>3</sub><sup>4</sup>

C#Mm<sub>2</sub>

D#°7

Aø<sub>5</sub><sup>6</sup>

G m<sub>2</sub>

F m<sub>5</sub><sup>6</sup>

3. Name the key in the mode indicated. Then give the Roman numeral for each chord in the specified key. Be sure you correctly show chord quality and inversion by the type of Roman numeral you use (e.g., lowercase = minor) and figured bass symbols. Both 7th chords and triads are represented. (20 pts.)

Major keys:

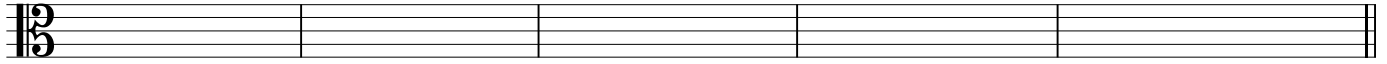
\_\_\_\_\_ : \_\_\_\_\_ : \_\_\_\_\_ : \_\_\_\_\_ : \_\_\_\_\_ :

Minor keys:

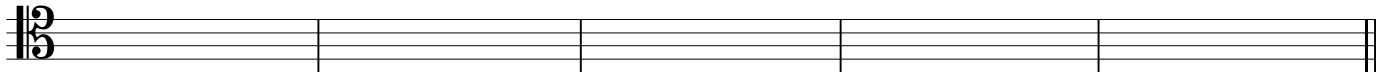
\_\_\_\_\_ : \_\_\_\_\_ : \_\_\_\_\_ : \_\_\_\_\_ : \_\_\_\_\_ :

Introduction to Music Theory/Enrichment Assignment 11.1

4. Write the key signature specified. Then write the chord indicated by the Roman numeral and figured bass. Both 7th chords and triads are represented. Keep in mind that the harmonic form of the minor mode may need to be used in order to write the requested quality of chords in the minor mode. (20 pts.)



A Major:  $ii^4_3$                        $vii^{o6}$                        $vi^7$                        $iii^6_5$                        $V^6_4$



b<sup>b</sup> minor:  $ii^{o6}_5$                        $iv^7$                        $vii^{o}_2$                        $i^7$                        $III+^6$

5. Write the requested chord given the quality, inversion and part of the chord (Root, 3rd, 5th, 7th). (30 pts.)

sample

3rd

(1st build chord  
in root position)

5th

3rd

5th



$o^4_3$

$o^7$

$o^6_5$

Mm<sup>7</sup>

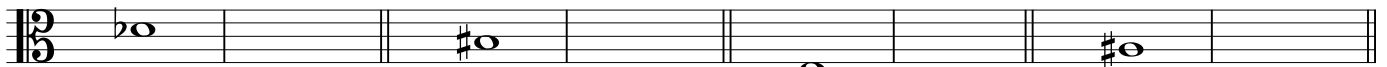
m<sub>2</sub>

7th

5th

3rd

root



M<sup>4</sup><sub>3</sub>

m<sup>7</sup>

$o^6_5$

M<sub>2</sub>

root

7th

root

3rd



Mm<sup>6</sup><sub>5</sub>

$o_2$

$o^6_5$

M<sup>4</sup><sub>3</sub>

7th

3rd

5th

7th



M<sup>6</sup><sub>5</sub>

$o_2$

m<sup>4</sup><sub>3</sub>

Mm<sup>4</sup><sub>3</sub>