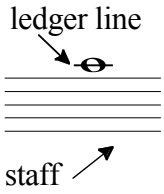


"Note-ables": Music Symbols

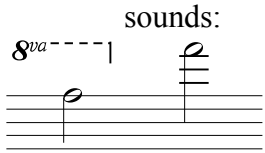


accidentals:

- # sharp (raises pitch 1/2 step)
- b flat (lowers pitch 1/2 step)
- ♮ natural (negates previous accidental)
- × double sharp (raises pitch 1 whole step)
- ♭♭ double flat (lowers pitch 1 whole step)

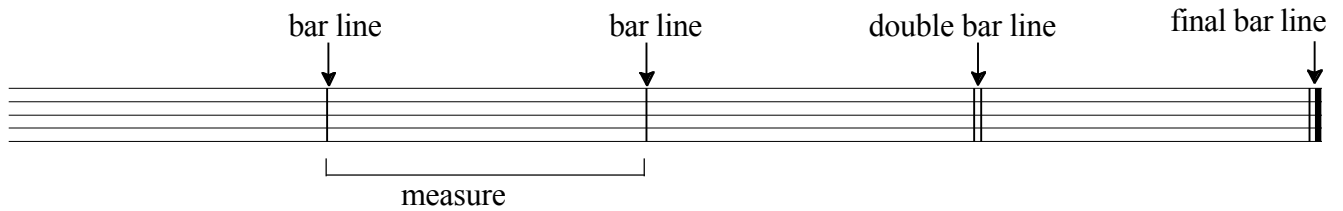
dynamics:

- ff*** very loud
- f*** loud
- mf*** medium loud
- mp*** medium soft
- p*** soft
- pp*** very soft
- cresc. (<) gradually louder
- dim./decresc. (>) gradually softer



legato:

staccato:

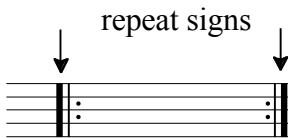
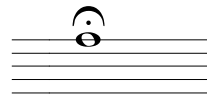


C "common time" (4/4)

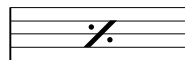
C "cut time" or *alla breve* (2/2; or simply a half note gets one beat)



fermata



repeat previous measure



D.C. (*da capo*) repeat from beginning

D.S. (*dal segno*) repeat from the sign (§)

Tempo markings from slow to fast:

largo

lento

adagio

andante

moderato

allegretto

allegro

prestissimo

ritardando

gradually slow down

accelerando

gradually speed up