

"Note-ables": Note/Rest Values

1 whole note



equals

2 half notes



equals

4 quarter notes



equals

8 eighth notes

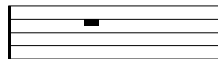


equals

16 sixteenth notes



whole rest



half rest



quarter rest



eighth rest



sixteenth rest



A dot added to the right of a notehead increases its length by 1/2 ($\text{dotted quarter} = \text{quarter} + \text{eighth}$)