

# ~♪ Sample Midterm Exam B--Key

1. Write the name of each pitch and then indicate wheter it would be played on a white key or a black key on the piano. (10 pts.)

Pitch   G     B#     Eb     A#     Db     Fb     Ab     G#     D     Bb  

W/B   W     W     B     B     B     W     B     B     W     B  

2. Add stems and beam the notes in groups of three *sixteenth* notes. (6 pts.)

3. Give *one* note value to complete each of the following measures. (4 pts.)

4. Place correct bar lines in the following rhythmic exercise. (3 pts.)

5. Rewrite each of the following measures to show the correct grouping of the beats. (4 pts.)

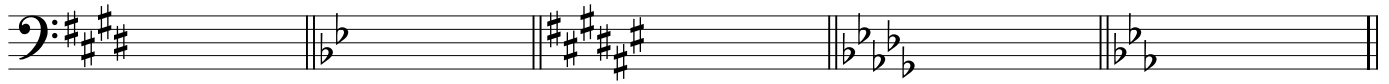
6. Add correct meter signatures to each of the following measures. (6 pts.)

7. Identify the size of each step as **W** (whole) or **H** (half) or **S** (same pitch). (5 pts.)

  W     W     S     H     S

Introduction to Music Theory/Sample Midterm Exam B--Key

8. Identify the following keys in both major and minor. (10 pts.)

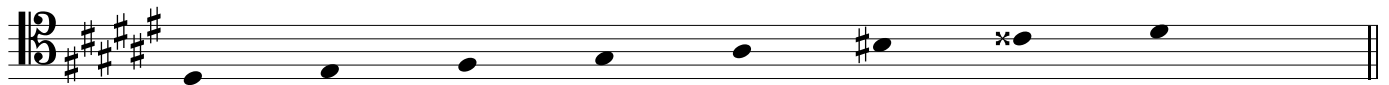


M:   E          Bb          F#          Db          Eb    
 m:   c#          g          d#          bb          c  

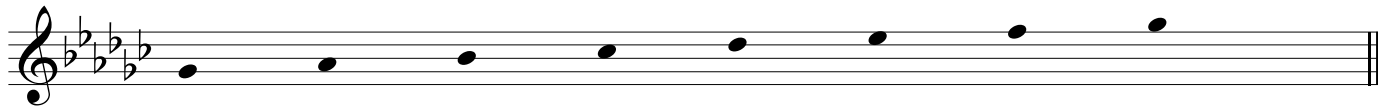
9. Write key signatures and ascending scales as indicated. (9 pts.)



a. Parallel minor (harmonic) of D major =   D harmonic minor  

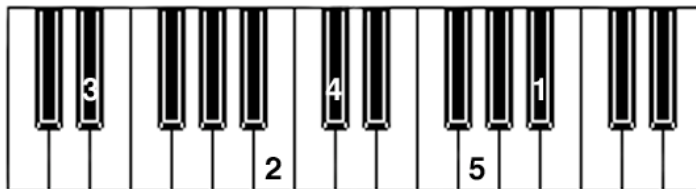


b. Relative minor (melodic) of F# major =   d# melodic minor  



c. Relative major of eb minor =   Gb major  

10. Five pitches are numbered on the keyboard below. Notate their correct pitches on the alto clef provided. "Middle" C is located in the middle of this keyboard. (5 pts.)



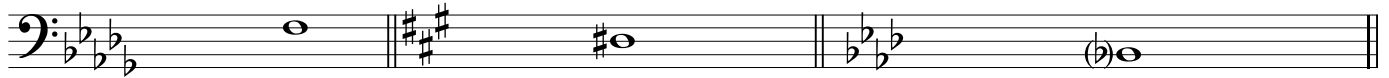
Introduction to Music Theory/Sample Midterm Exam B--Key

11. Beginning on the pitch given, write an octatonic scale, one octave, ascending only. (2 pts.)



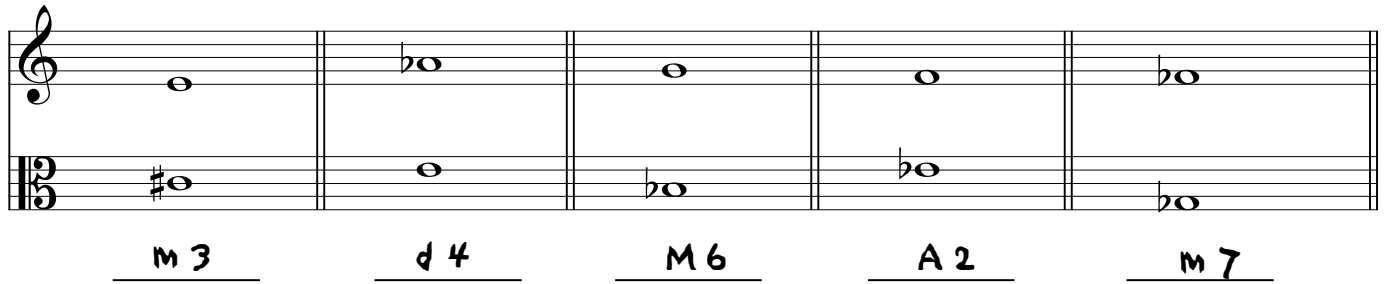
Begin with a whole step.

12. Given the pitch, mode and scale-degree name, write the correct key signature. (3 pts.)

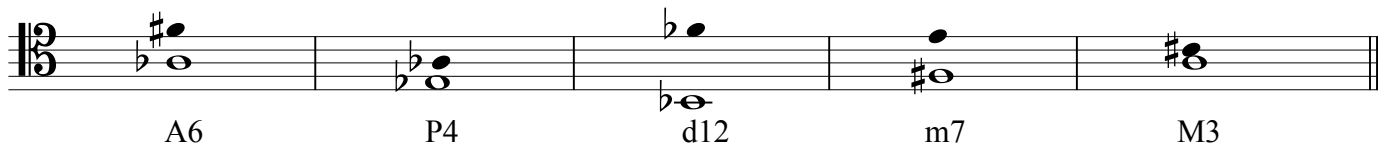


- a. mediant in major    b. submediant in asc. melodic minor    c. subdominant in harmonic minor

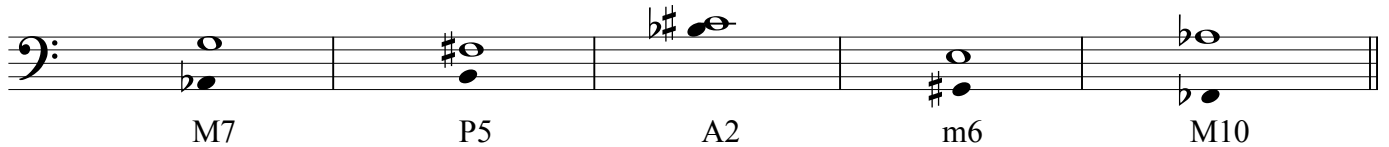
13. Identify the following intervals by quality and size. (5 pts.)



14. Write the following intervals *above* the given pitch. (5 pts.)



15. Write the following intervals *below* the given pitch. (5 pts.)



16. Fill in the blanks. (3 pts.)

- a. A m2 inverts to M 7 .  
 b. A d5 inverts to A 4 .  
 c. A M6 inverts to m 3 .

*Introduction to Music Theory/Sample Midterm Exam B--Key*

Match the following: (15 pts.)

- |                     |               |                  |
|---------------------|---------------|------------------|
| a. accelerando      | h. piano      | o. anacrusis     |
| b. fortissimo       | i. D.S.       | p. Phrygian mode |
| c. D.C.             | j. legato     | q. Allegro       |
| d. whole-tone scale | k. Grave      | r. Dorian mode   |
| e. tone row         | l. diminuendo | s. Lydian mode   |
| f. chromatic scale  | m. fermata    | t. mezzo piano   |
| g. staccato         | n. crescendo  | u. Mixolydian    |

L 17. gradually getting softer

T 18. moderately soft


E 19. an arbitrary arrangement of a series of 12 pitches that serves as a pitch pattern for a composition

U 20. 

F 21. a scale built in half steps

K 22. a very slow tempo

A 23. gradually getting faster

M 24. 

J 25. perform in a smooth, connected manner

S 26. 

B 27. very loud

D 28. a scale built in whole steps

O 29. an incomplete measure at the beginning

C 30. repeat from the beginning

P 31. 