

Sample Midterm Exam B

Date: _____

Score: _____

1. Write the name of each pitch and then indicate wheter it would be played on a white key or a black key on the piano. (10 pts.)

Pitch _____

W/B _____

2. Add stems and beam the notes in groups of three *sixteenth* notes. (6 pts.)

3. Give *one* note value to complete each of the following measures. (4 pts.)

4. Place correct bar lines in the following rhythmic exercise. (3 pts.)

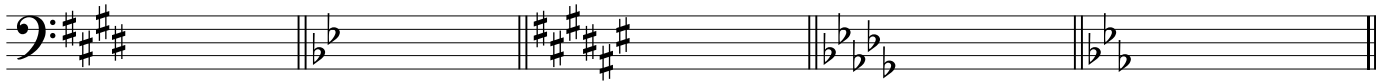
5. Rewrite each of the following measures to show the correct grouping of the beats. (4 pts.)

6. Add correct meter signatures to each of the following measures. (6 pts.)

7. Identify the size of each step as **W** (whole) or **H** (half) or **S** (same pitch). (5 pts.)

Introduction to Music Theory/Sample Midterm Exam B

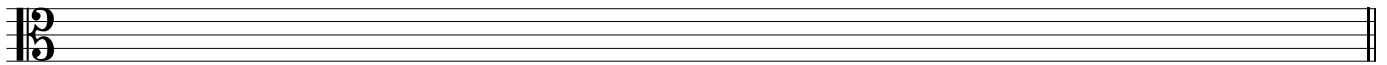
8. Identify the following keys in both major and minor. (10 pts.)



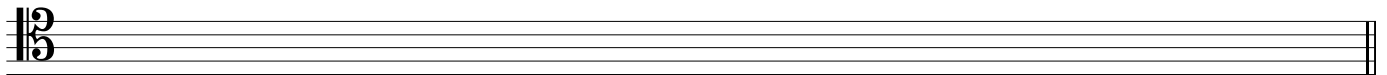
M: _____

m: _____

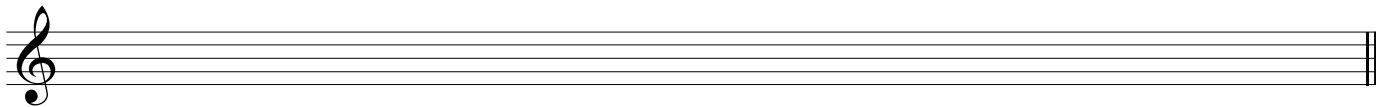
9. Write key signatures and ascending scales as indicated. (9 pts.)



a. Parallel minor (harmonic) of D major = _____

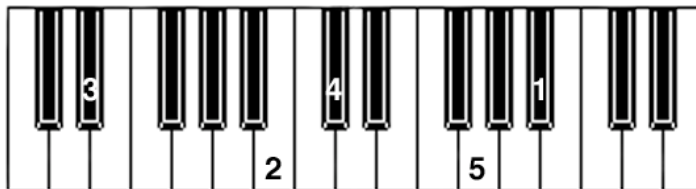


b. Relative minor (melodic) of F# major = _____



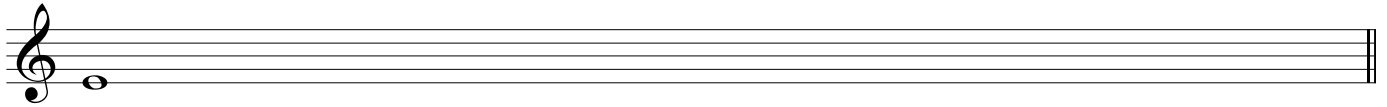
c. Relative major of e^b minor = _____

10. Five pitches are numbered on the keyboard below. Notate their correct pitches on the alto clef provided. "Middle" C is located in the middle of this keyboard. (5 pts.)



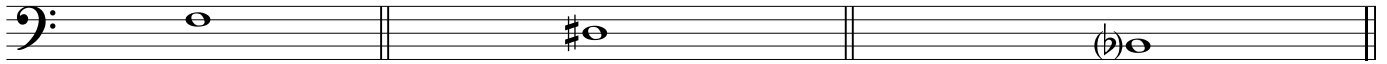
Introduction to Music Theory/Sample Midterm Exam B

11. Beginning on the pitch given, write an octatonic scale, one octave, ascending only. (2 pts.)



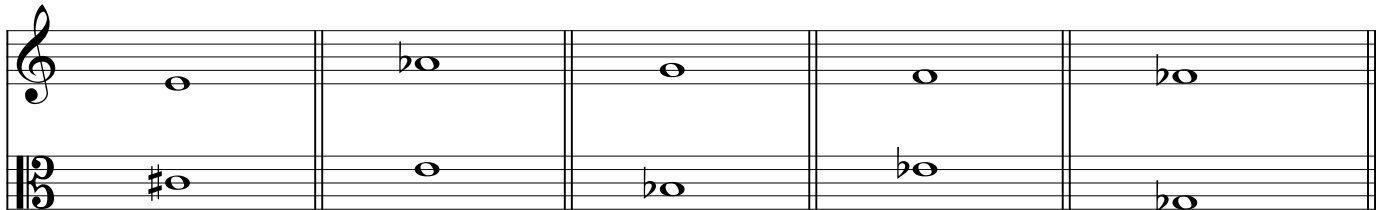
Begin with a whole step.

12. Given the pitch, mode and scale-degree name, write the correct key signature. (3 pts.)

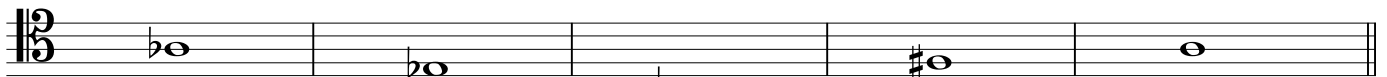


- a. mediant in major b. submediant in asc. melodic minor c. subdominant in harmonic minor

13. Identify the following intervals by quality and size. (5 pts.)



14. Write the following intervals *above* the given pitch. (5 pts.)



- A6 P4 d12 m7 M3

15. Write the following intervals *below* the given pitch. (5 pts.)



- M7 P5 A2 m6 M10

16. Fill in the blanks. (3 pts.)

- a. A m2 inverts to _____ .
 b. A d5 inverts to _____ .
 c. A M6 inverts to _____ .

Introduction to Music Theory/Sample Midterm Exam B

Match the following: (15 pts.)

- | | | |
|---------------------|---------------|------------------|
| a. accelerando | h. piano | o. anacrusis |
| b. fortissimo | i. D.S. | p. Phrygian mode |
| c. D.C. | j. legato | q. Allegro |
| d. whole-tone scale | k. Grave | r. Dorian mode |
| e. tone row | l. diminuendo | s. Lydian mode |
| f. chromatic scale | m. fermata | t. mezzo piano |
| g. staccato | n. crescendo | u. Mixolydian |

_____ 17. gradually getting softer

_____ 18. moderately soft


_____ 19. an arbitrary arrangement of a series of 12 pitches that serves as a pitch pattern for a composition

_____ 20. 

_____ 21. a scale built in half steps

_____ 22. a very slow tempo

_____ 23. gradually getting faster

_____ 24. 

_____ 25. perform in a smooth, connected manner

_____ 26. 

_____ 27. very loud

_____ 28. a scale built in whole steps

_____ 29. an incomplete measure at the beginning

_____ 30. repeat from the beginning

_____ 31. 