

~ Sample Midterm Exam A

Date: _____

Score: _____

1. Write the name of each pitch and then indicate whether it would be played on a white key or a black key on the piano. (10 pts.)

Pitch _____

W/B _____

2. Add stems and beam the notes in groups of three *sixteenth* notes. (6 pts.)

3. Give *one* note value to complete each of the following measures. (4 pts.)

4. Place correct bar lines in the following rhythmic exercise. (7 pts.)

a.

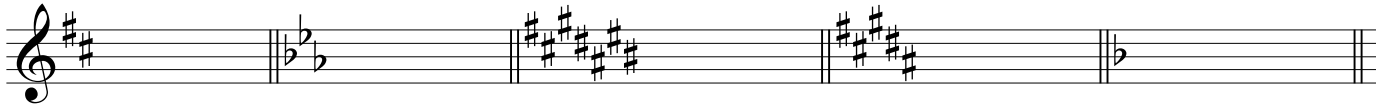
b.

5. Add correct meter signatures to each of the following measures. (6 pts.)

6. Identify the size of each step as **W** (whole) or **H** (half) or **S** (same pitch). (5 pts.)

Introduction to Music Theory/Sample Midterm Exam A

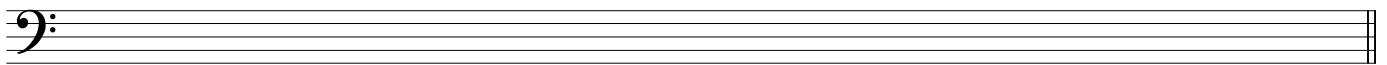
7. Identify the following keys in both major and minor. (10 pts.)



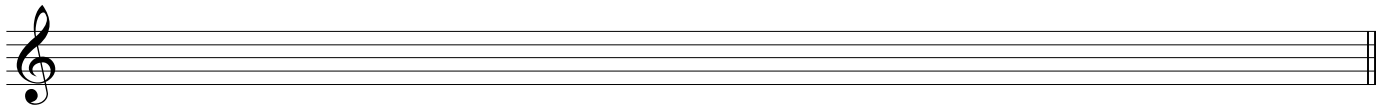
M: _____

m: _____

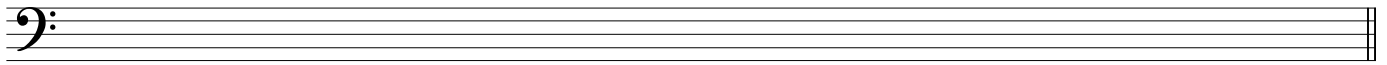
8. Write key signatures and ascending scales as indicated. (9 pts.)



a. Relative major of g minor = _____

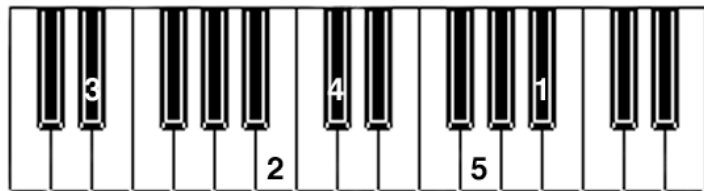


b. Relative minor (melodic) of E major = _____



c. Parallel minor (harmonic) of F major = _____

9. Five pitches are numbered on the keyboard below. Notate their correct pitches in the clefs provided. "Middle" C is located in the middle of this keyboard. (5 pts.)



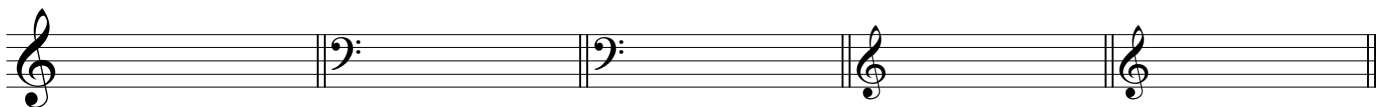
1

2

3

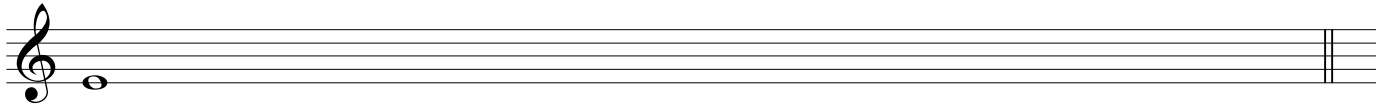
4

5

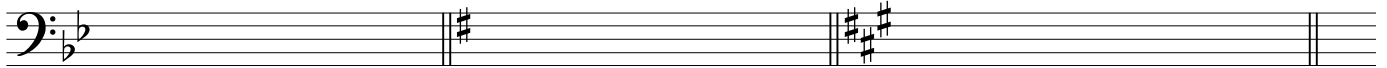


Introduction to Music Theory/Sample Midterm Exam A

10. Beginning on the pitch given, write a whole-tone scale, one octave, ascending only. (2 pts.)

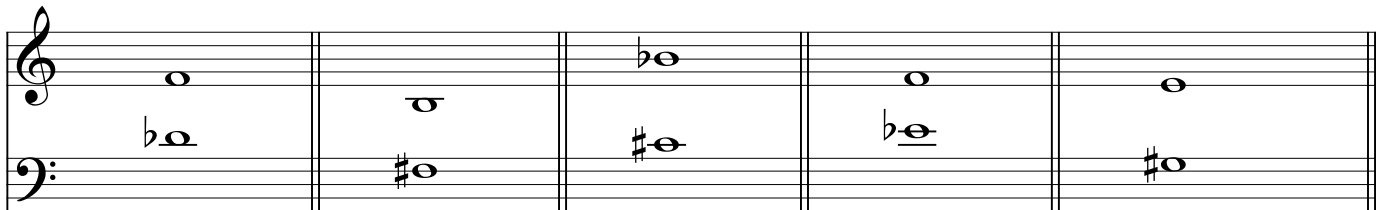


11. Given the key signature, mode and scale-degree name, write the correct pitch. (3 pts.)

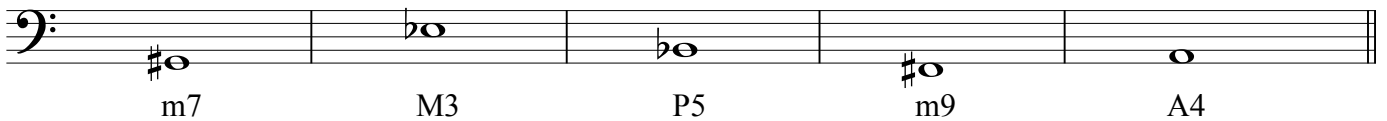


- a. subdominant in major b. leading tone in melodic minor c. supertonic in harmonic minor

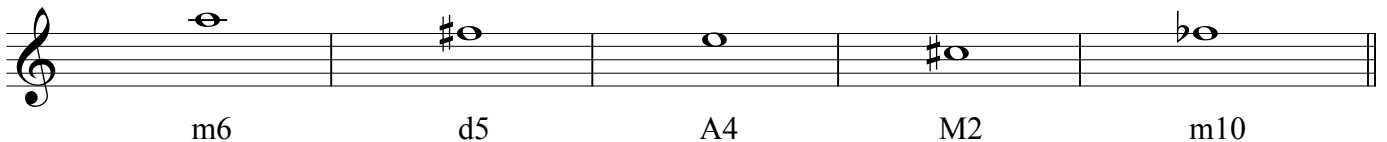
12. Identify the following intervals by quality and size. (5 pts.)



13. Write the following intervals *above* the given pitch. (5 pts.)



14. Write the following intervals *below* the given pitch. (5 pts.)



15. Fill in the blanks. (3 pts.)

- a. A M3 inverts to _____ .
- b. A d7 inverts to _____ .
- c. A P4 inverts to _____ .

Introduction to Music Theory/Sample Midterm Exam A

Match the following: (15 pts.)

- | | | |
|--------------------|---------------|------------------|
| a. octave | g. fermata | m. Lydian mode |
| b. fortissimo | h. pianissimo | n. mezzo forte |
| c. D.C. | i. D.S. | o. ritardando |
| d. staccato | j. slur | p. Phrygian mode |
| e. tone row | k. Largo | q. Allegro |
| f. octatonic scale | l. crescendo | r. Dorian mode |

_____ 16. gradually getting louder

_____ 17. very loud


_____ 18. an arbitrary arrangement of a series of 12 pitches that serves as a pitch pattern for a composition

_____ 19. 

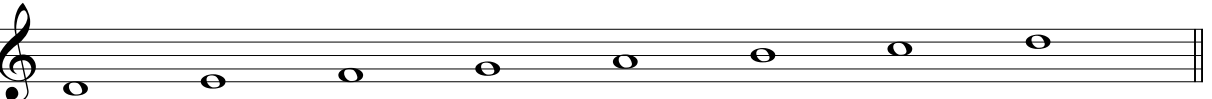
_____ 20. an indication to repeat from the beginning

_____ 21. a fast tempo

_____ 22. gradually getting slower

_____ 23. 

_____ 24. perform in a detached manner

_____ 25. 

_____ 26. very slow tempo

_____ 27. a scale that alternates whole steps and half steps

_____ 28. very soft

_____ 29. repeat from the sign (§)

_____ 30. 