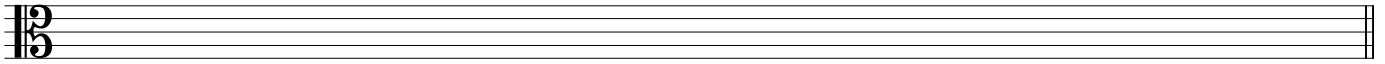
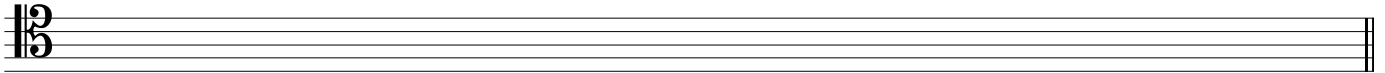


Introduction to Music Theory/Sample Final Exam C

7. Write key signatures and ascending scales as indicated. (6 pts.)



a. Relative minor (harmonic) of B^b major: _____



b. Parallel major of c[#] minor: _____

Allegro

Melody A: *pp*

Andante

Melody B:

Introduction to Music Theory/Sample Final Exam C

15. Identify the following intervals by quality and size. (5 pts.)

16. Write the following intervals *above* the given pitch. (5 pts.)

17. Write the following intervals *below* the given pitch. (5 pts.)

18. Identify the following triads by quality (M, m, dim., aug.) and inversion. (6 pts.)

sample

dim. 6

19. Identify the following 7th chords by quality (M, m, Mm, °, ø) and inversion. (6 pts.)

Introduction to Music Theory/Sample Final Exam C

20. Given a pitch, quality, and member of the chord, write the following triads in root position. (5 pts.)

minor 3rd
major 5th
diminished root
major 3rd
augmented 5th

21. Given a pitch, quality, and member of the chord, write the following 7th chords in root position. (5 pts.)

m7 5th
°7 7th
ø7 3rd
M7 5th
Mm7 root

22. On the staff provided, write the key signatures and chords as indicated. (8 pts.)

F#: I⁶
B^b: IV⁴₃
G: iii⁶₄
D^b: ii

c#: iiø⁶₅
b: VI⁷
f: V₂
d: VII

23. Analyze the following piece. (14 pts. total)

a. Name the key and mode (2 pts.). Analyze the chord in each measure and give the Roman numeral. (1 pt. each)

b. Circle and label all nonchord tones in the melody. (1/2 pt. each)

Key: _____
