

Sample Final Exam B--Key

1. a) Identify the name of each of the following pitches.
 b) Give an enharmonic name for each of the pitches.
 (6 pts.)

Name:	<u>E_b</u>	<u>G_b</u>	<u>B_#</u>	<u>E</u>	<u>A_#</u>	<u>C_b</u>
Enharmonic equivalent:	<u>D_#</u>	<u>F_#</u>	<u>C</u>	<u>F_b</u>	<u>B_b</u>	<u>B</u>

2. Give one note value to complete each of the following measures. (6 pts.)

3. Place correct bar lines in the following rhythmic exercise. (3 pts.)

4. Identify the following keys in both major and minor. (10 pts.)

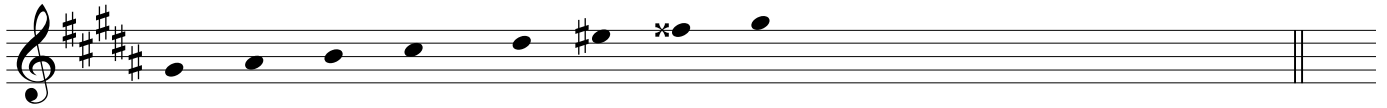
M:	<u>A</u>	<u>D_b</u>	<u>G</u>	<u>A_b</u>	<u>B</u>
m:	<u>f_#</u>	<u>bflat</u>	<u>e</u>	<u>f</u>	<u>g_#</u>

5. Given the key signature, mode and scale-degree name, write the requested pitch. (4 pts.)

- | | | | |
|---------------------|-------------------------------|----------------------------------|-------------------------------|
| a. dominant (major) | b. submediant (melodic minor) | c. leading tone (harmonic minor) | d. supertonic (natural minor) |
|---------------------|-------------------------------|----------------------------------|-------------------------------|

Introduction to Music Theory/Sample Final Exam B--Key

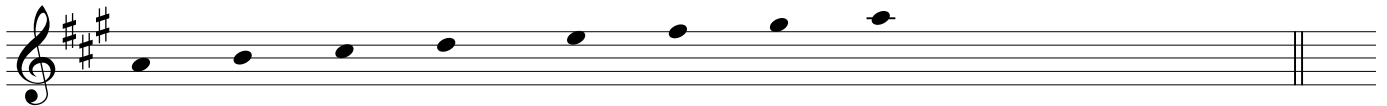
6. Write key signatures and ascending scales as indicated. (6 pts.)



a. Relative minor (melodic) of B major: g# melodic minor



b. Parallel minor (harmonic) of F major: f harmonic minor



c. Relative major of f# minor: A major

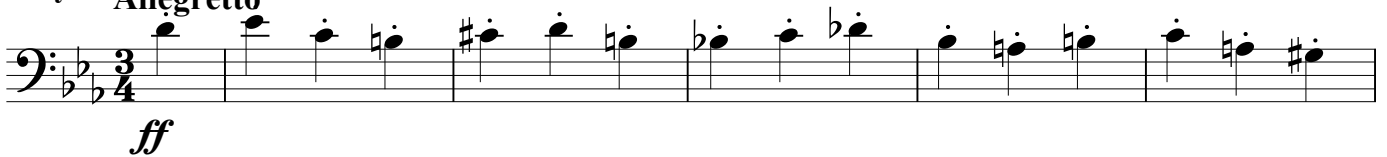
Melody A: **Largo**



Melody B: **Presto**



Melody C: **Allegretto**



Answer the questions below. They refer to the three melodies found above (A, B, C). (6 pts.)

- | | |
|---|---|
| 7. Which melody is the fastest? B _____ | 11. Which melody is the loudest? C _____ |
| 8. Which melody is played staccato? C _____ | 12. Which melody is chromatic? C _____ |
| 9. Which melody is based on the melodic minor scale? A _____ | |
| 10. In which melody should the last note be played longer than its actual value? A _____ | |

Introduction to Music Theory/Sample Final Exam B--Key

13. Identify the following intervals by number size and quality: (5 pts.)

Handwritten labels for the intervals in exercise 13:

- M 6
- d 7
- A 11 (CA4)
- P 5
- m 3

14. Write the following intervals *above* the given pitch. (5 pts.)

Handwritten labels for the intervals in exercise 14:

- P4
- m7
- M3
- m13
- A5

15. Write the following intervals *below* the given pitch. (5 pts.)

Hint: If you tend to miss these exercises, go back and carefully review the "movies" in Lesson 6.1.

Handwritten labels for the intervals in exercise 15:

- P5
- M6
- A9
- M3
- d7

16. Identify the following triads by quality (M, m, dim., aug.) and inversion. (6 pts.)

Handwritten labels for the triads in exercise 16:

- aug.
- M 6₄
- m 6
- dim. 6
- m 6₄
- A 6

17. Identify the following 7th chords by quality (M, m, Mm, °, ø) and inversion. (6 pts.)

Handwritten labels for the 7th chords in exercise 17:

- M 2
- ° 6₅
- M 4₃
- ø 7
- Mm 6₅
- M 7

Introduction to Music Theory/Sample Final Exam B--Key

18. Given a pitch, quality, and member of the chord, write the following triads in root position. (5 pts.)

diminished 5th minor root augmented 3rd minor 5th Major 3rd

19. Given a pitch, quality, and member of the chord, write the following 7th chords in root position. (5 pts.)

\emptyset^7 3rd M7 5th $\#^{\circ}7$ root Mm7 7th m7 5th

20. On the staff provided, write the key signatures and chords as indicated. (8 pts.)

D^b major: IV₄⁶ vii \emptyset^7 vi ii₂

F[#] minor: V⁷ ii \emptyset^6_5 iv₂ III₃⁴

21. Analyze the following piece. (14 pts. total)

- Name the key and mode (2 pts.). Analyze the chord in each measure and give the Roman numeral. (1 pt. each)
- Circle and label all nonchord tones in the melody. (1/2 pt. each)

Key: E^b major

1 V₆ I V

vi₇ IV₆ V₆ I