

Sample Final Exam B

Date: _____

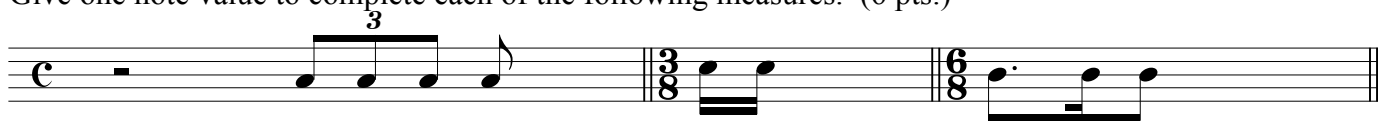
Score: _____

1. a) Identify the name of each of the following pitches.
 b) Give an enharmonic name for each of the pitches.
 (6 pts.)



Name: _____
 Enharmonic equivalent: _____

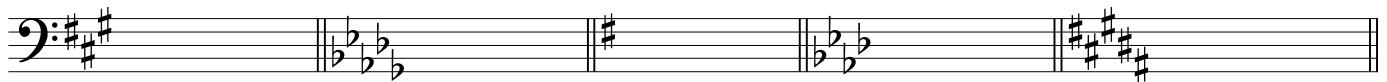
2. Give one note value to complete each of the following measures. (6 pts.)



3. Place correct bar lines in the following rhythmic exercise. (3 pts.)

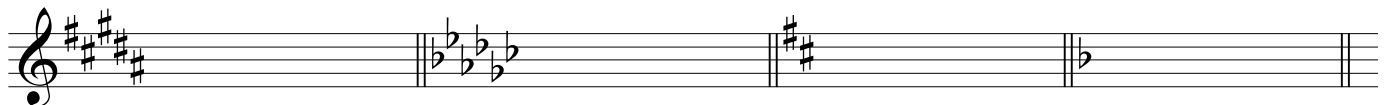


4. Identify the following keys in both major and minor. (10 pts.)



M: _____
 m: _____

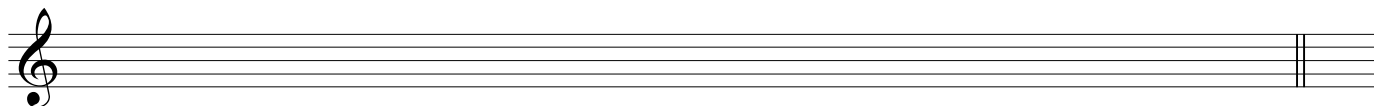
5. Given the key signature, mode and scale-degree name, write the requested pitch. (4 pts.)



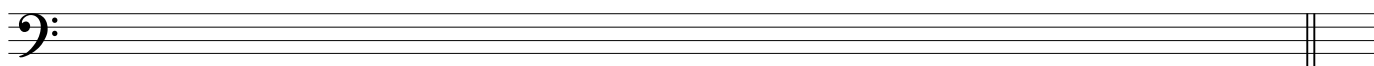
- a. dominant (major) b. submediant (melodic minor) c. leading tone (harmonic minor) d. supertonic (natural minor)

Introduction to Music Theory/Sample Final Exam B

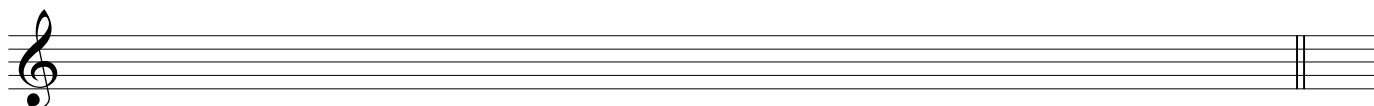
6. Write key signatures and ascending scales as indicated. (6 pts.)



a. Relative minor (melodic) of B major: _____



b. Parallel minor (harmonic) of F major: _____



c. Relative major of f# minor: _____

Melody A: Largo



Melody B: Presto



Melody C: Allegretto



Answer the questions below. They refer to the three melodies found above (A, B, C). (6 pts.)

- | | |
|--|--|
| 7. Which melody is the fastest? _____ | 11. Which melody is the loudest? _____ |
| 8. Which melody is played staccato? _____ | 12. Which melody is chromatic? _____ |
| 9. Which melody is based on the melodic minor scale? _____ | |
| 10. In which melody should the last note be played longer than its actual value? _____ | |

Introduction to Music Theory/Sample Final Exam B

13. Identify the following intervals by number size and quality: (5 pts.)

A musical staff in C major with five pairs of notes. The notes are: 1. G4 (treble) and C4 (bass); 2. A4 (treble) and E4 (bass); 3. B4 (treble) and G4 (bass); 4. C5 (treble) and B4 (bass); 5. D5 (treble) and A4 (bass).

14. Write the following intervals *above* the given pitch. (5 pts.)

A musical staff in C major with five notes and their interval labels below them: 1. C4 (labeled P4); 2. B3 (labeled m7); 3. E4 (labeled M3); 4. A3 (labeled m13); 5. G3 (labeled A5).

15. Write the following intervals *below* the given pitch. (5 pts.)

A musical staff in C major with five notes and their interval labels below them: 1. G3 (labeled P5); 2. A3 (labeled M6); 3. E4 (labeled A9); 4. C4 (labeled M3); 5. B3 (labeled d7).

16. Identify the following triads by quality (M, m, dim., aug.) and inversion. (6 pts.)

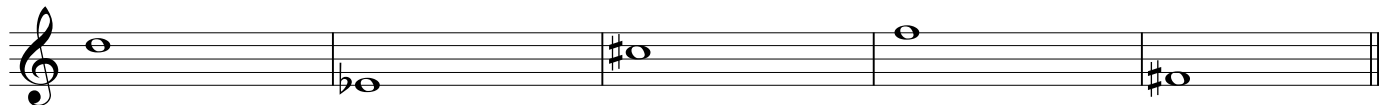
A musical staff with six triads: 1. C major (root position); 2. D major (root position); 3. E major (root position); 4. F major (first inversion); 5. G major (second inversion); 6. A major (root position).

17. Identify the following 7th chords by quality (M, m, Mm, °, ø) and inversion. (6 pts.)

A musical staff with six 7th chords: 1. C major 7 (root position); 2. D major 7 (root position); 3. E major 7 (root position); 4. F major 7 (first inversion); 5. G major 7 (second inversion); 6. A major 7 (root position).

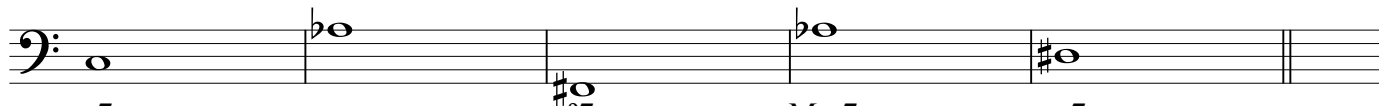
Introduction to Music Theory/Sample Final Exam B

18. Given a pitch, quality, and member of the chord, write the following triads in root position. (5 pts.)




diminished 5th
minor root
augmented 3rd
minor 5th
Major 3rd

19. Given a pitch, quality, and member of the chord, write the following 7th chords in root position. (5 pts.)



ø7 3rd
M7 5th
ø7 root
Mm7 7th
m7 5th

20. On the staff provided, write the key signatures and chords as indicated. (8 pts.)



D^b major: IV₄⁶
viiø⁷
vi
ii₂

f# minor: V⁷
iiø₅⁶
iv₂
III₃⁴

21. Analyze the following piece. (14 pts. total)

- a. Name the key and mode (2 pts.). Analyze the chord in each measure and give the Roman numeral. (1 pt. each)
- b. Circle and label all nonchord tones in the melody. (1/2 pt. each)

Key: _____

