

# Sample Final Exam A

Date: \_\_\_\_\_

Score: \_\_\_\_\_

1. a) Identify the name of each of the following pitches.  
 b) Give an enharmonic name for each of the pitches.  
 (6 pts.)

Name: \_\_\_\_\_  
 Enharmonic equivalent: \_\_\_\_\_

2. Give one note value to complete each of the following measures. (6 pts.)

3. Place correct bar lines in the following rhythmic exercise. (3 pts.)

4. Identify the following keys in both major and minor. (10 pts.)

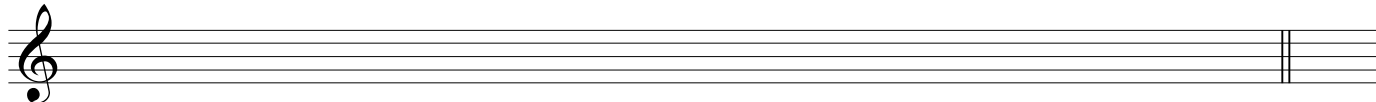
M: \_\_\_\_\_  
 m: \_\_\_\_\_

5. Given the key signature, mode and scale-degree name, write the requested pitch. (4 pts.)

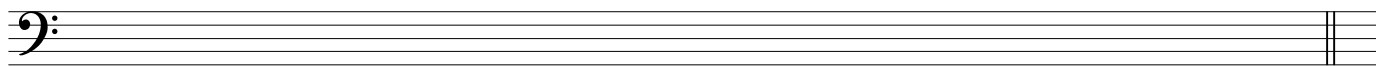
a. submediant (natural minor)      b. leading tone (melodic minor)      c. tonic (harmonic minor)      d. mediant (major)

*Introduction to Music Theory/Sample Final Exam A*

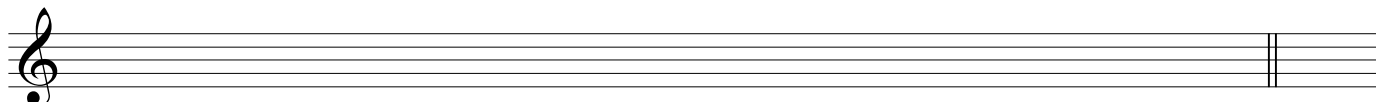
6. Write key signatures and ascending scales as indicated. (6 pts.)



a. Relative major of b minor: \_\_\_\_\_

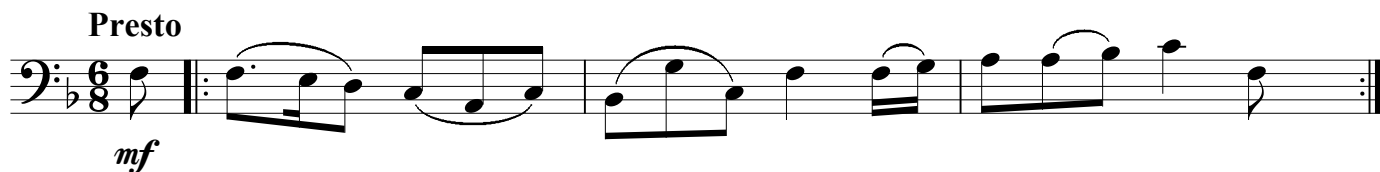


b. Relative minor (harmonic) of D<sup>b</sup> major: \_\_\_\_\_

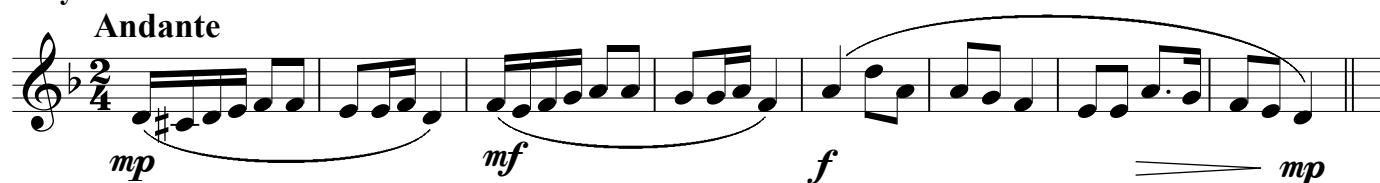


c. Parallel minor (melodic) of G major: \_\_\_\_\_

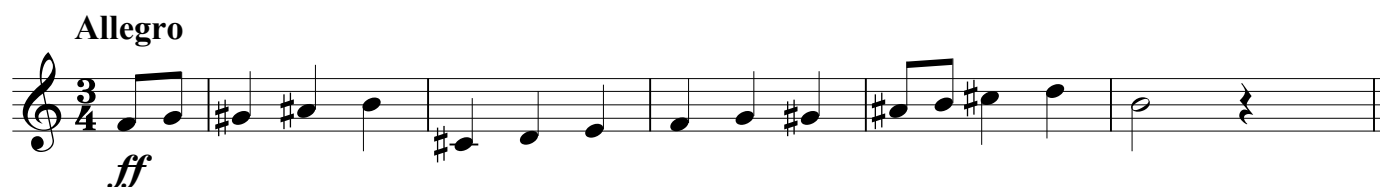
**Melody A:**



**Melody B:**



**Melody C:**



Answer the questions below. They refer to the three melodies found above (A, B, C). (6 pts.)

7. Which melody is the slowest? \_\_\_\_\_
8. Which melody does not have sixteenth notes? \_\_\_\_\_
9. Which melody is based on the harmonic minor scale? \_\_\_\_\_
10. Which melody is based on the octatonic scale? \_\_\_\_\_
11. Which melody has a diminuendo? \_\_\_\_\_
12. Which melody is repeated?

*Introduction to Music Theory/Sample Final Exam A*

13. Identify the following intervals by number size and quality: (5 pts.)

\_\_\_\_\_

14. Write the following intervals *above* the given pitch. (5 pts.)

15. Write the following intervals *below* the given pitch. (5 pts.)

16. Identify the following triads by quality (M, m, dim., aug.). (6 pts.)

17. Identify the following 7th chords by quality (M, m, Mm, °, ø). (6 pts.)

*Introduction to Music Theory/Sample Final Exam A*

18. Given a pitch, quality, and member of the chord, write the following triads in root position. (5 pts.)

augmented 5th      diminished root      major 3rd      diminished 5th      minor 3rd

19. Given a pitch, quality, and member of the chord, write the following 7th chords in root position. (5 pts.)

$o_7$  3rd      Mm7 5th      M7 root      m7 7th       $o_7$  5th

20. On the staff provided, write the key signatures and chords as indicated. (8 pts.)

D major:    vii $\emptyset$ <sup>7</sup>                      iii                      ii<sup>7</sup>                      V<sup>7</sup>

c minor:    V                      i<sup>7</sup>                      VII                      VI<sup>7</sup>

21. Analyze the following piece. (14 pts. total)

a. Name the key and mode (2 pts.). Analyze the chord in each measure and give the Roman numeral. (1 pt. each)

b. Circle and label all nonchord tones in the melody. (1/2 pt. each)

Key: \_\_\_\_\_